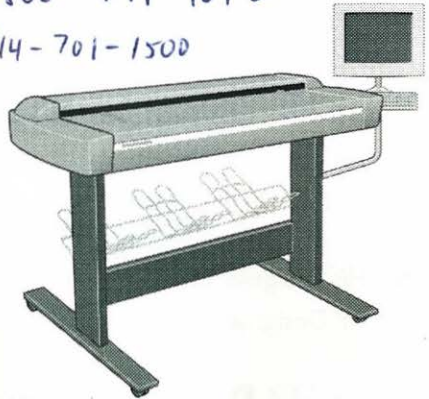


Source Graphics
1-800-791-9042
714-701-1500



HP Designjet 800ps PRINTER



HP Designjet

815mfp

Printer Scanner

HP Designjet

Scanner 4200

**Quick
Reference
Guide**



Serial Nos.
Scanner: DK54D21002
Printer: S656692012
(yini)

Your HP Designjet 815mfp

The HP Designjet 815mfp delivers large-format color copies and is as simple to use as a conventional office copy machine. The components of the system are:

- HP Designjet 815mfp scanner
- HP Designjet 800ps printer
- HP Designjet scanner software

Your HP Designjet scanner 4200

The HP Designjet Scanner 4200 scans large-format prints and can file the scanned images or send them to a networked printer. The components of the system are:

- HP Designjet scanner 4200
- HP Designjet scanner software

Where to find information...

You can get online help from the Online Help button  in your HP Designjet scanner software.

If you would like to view this information on your computer, you can find the online help files on the 'Using your scanner' CD.

Further information is available from the following sources:

- The printed Assembly Instructions and Quick Reference Guide that came with your HP Designjet.
- HP Designjet Online: <http://www.hp.com/go/designjet/>.

Contents

Introduction

Using your scanner software.....	1
----------------------------------	---

Basic operations

Copying (overview)	3
Copying (step-by-step).....	5
Scanning to a file.....	9
Printing files	11

Further operations

Collated copies and copy sets	12
Scanning thick media	13
Previewing copies	17
Adding a new printer	20
Creating a new media profile	21
Scanning and copying files to CD	22

Troubleshooting

Touch screen error messages	23
Scanning problems	27
Flashing lights on the operator panel	28
Printing problems	29
Scanner software in the wrong language	30
Scanner software does not start	31

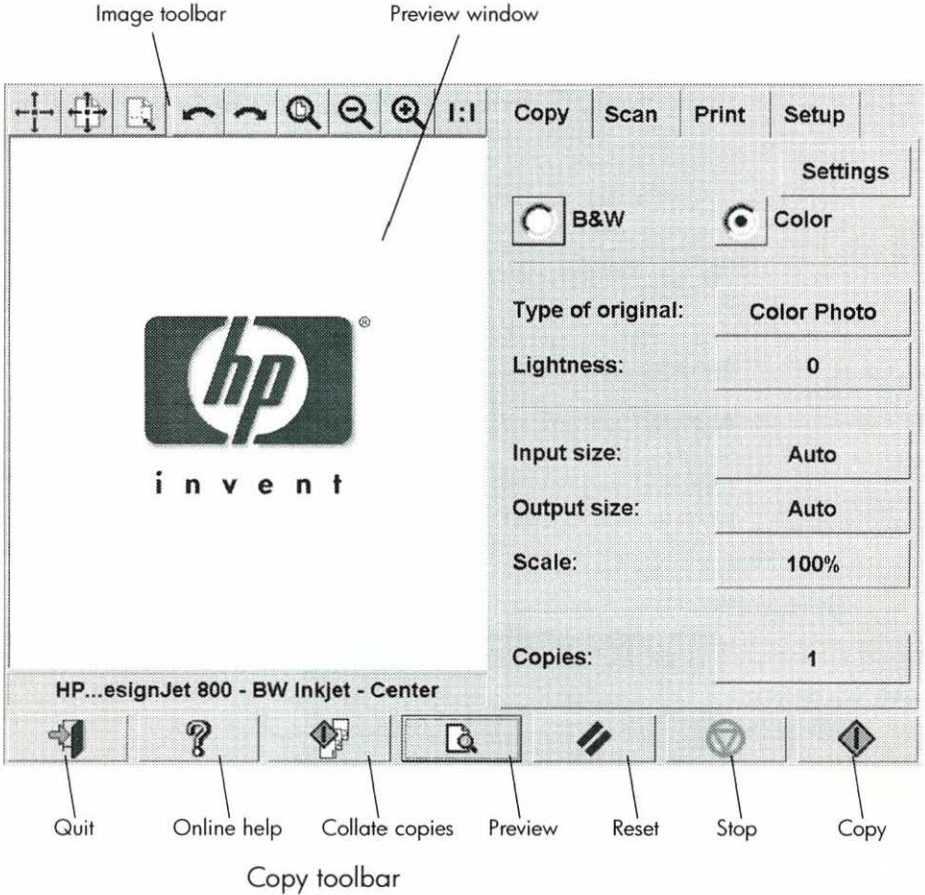
Using your scanner software

The user interface can be divided into two main sections:

- The viewing section on the left
- The control section on the right

Viewing section

Control section




The control section consists of the following control tabs:

- Copy: primary copy settings. The options available in the Copy tab will be sufficient for most users and common copy tasks.
- Scan: scan settings used when scanning to file rather than copying.
- Print: settings used when printing saved image files.
- Setup: printer, scanner, and job accounting settings that are likely to be changed infrequently.

The viewing section consists of:

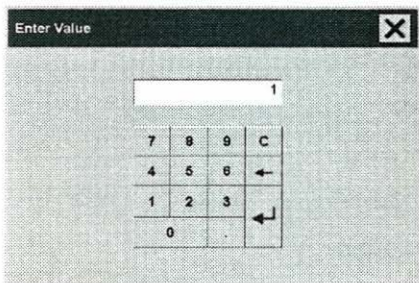
- The image toolbar at the top with tools for moving the image, moving and resizing the paper frame, alignment and zooming tools.
- The preview window for on-screen previewing and adjustments.

The copy toolbar contains the main copy commands and the Help button  for online help.

Entering numbers and names

A value keyboard appears in the touch screen interface whenever written information is required by the scanner software. You can also use the permanent keyboard below the touch screen to enter text and numbers.

The Enter key accepts your setting and returns to the previous dialog.





Copying (overview)

With your system up and ready, wide-format color copying is easy, and most copy tasks will require only a few settings. Remember to set your printer media width in your copy system software (see 'How do I set up the printer media width' in your online help).

Copying is controlled through the Copy tab and involves the following steps:

Copy	Scan	Print	Setup
Settings			
<input type="radio"/> B&W	<input checked="" type="radio"/> Color		
Type of original:	Color Photo		
Lightness:	0		
Input size:	Auto		
Output size:	Auto		
Scale:	100%		
Copies:	1		

- a - Insert the original face down into the scanner.
- b - Select Color or B&W (black and white) copying.
- c - Select your Type of original template.
- d - Set the input size. Usually this will be equal to the size of your original. You can select Auto and let the scanner detect the document's size.
- e - Set the intended output size of your copy. For making one-to-one copies, this will be the size of your original. You can also use Scale to determine the copy's size.
- f - Press the Copy button. 

To preview the image before printing, press the Preview button  to load a preview of your copy.

You can use the Stop button  to abort the current preview or copy process.

Copying (step-by-step)

1 Insert your document

You can load your original into the scanner from the scanner's center or side. The current loading method is shown in the Setup tab > Scan Options > Load.

- a - Place the document face down with the intended top edge forward in the scanner insertion slot.
- b - Slide the document gently into the insertion slot until you feel it pulled into the start position.

2 Select color or black-and-white copying

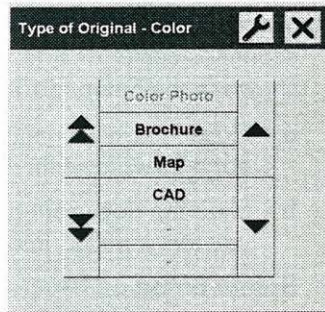
Your selection determines which Type of original templates will be available in the following step.

3 Select the type-of-original template

- a - Press the Type of original button in the Copy tab.

Type of Original Setup	
Type of original:	Color Photo
Method:	Continuous Tone
Lightness:	0
Saturation:	0
Red: <input type="text" value="0"/>	Green: <input type="text" value="0"/> Blue: <input type="text" value="0"/>
Black enhance:	Off
Backgnd. clean:	Off
Sharpen / blur:	0 / 0
Delete New Save OK	

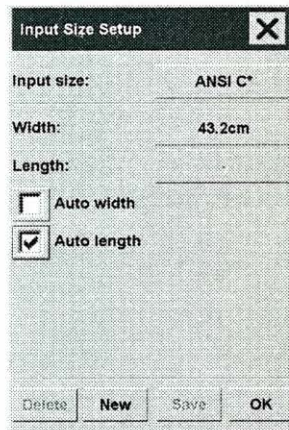
- b** - In the Type of Original (template) Setup dialog, press the Type of original button to see the list of templates available.



- c** - Select a Type of Original template that best describes your current input.
- d** - Press OK to apply your choice.

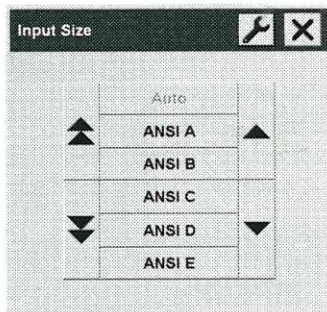
4 Select the input size

- a** - Press the Input size button in the Copy tab.



Copying (step-by-step)

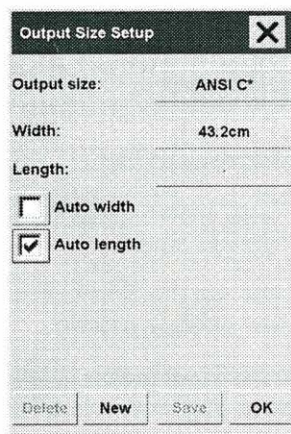
- b** - In the dialog box, press the Input size button to display the list of sizes predefined in your system.



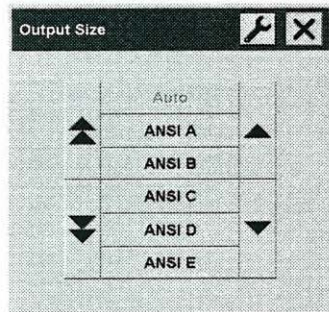
- c** - Select from the list the size that fits your original. Auto detection of width and length can also be selected.
- d** - Press OK to return to the Copy tab.

5 Select the output size

- a** - Press the Output size button in the Copy tab.



- b** - In the Output size Setup dialog, press the Output size button. Auto detection of width and length can be also selected.




- c** - Select from the list the size you want for your output copy.
- d** - Press OK to return to the Copy tab.


6 Set the number of copies

- a** - Press the Copies option if you want to make more than one copy of the loaded original.
- b** - Enter the number of copies in the edit field. This option allows you to leave the system working unattended.

7 Start copying

The Copy button  starts the copy process with the settings you made.

You can use the Stop button  to abort the current preview or copy process.

Press the Reset button  to clear your own settings and reset the application to all of the scanner software's default values.

Scanning to a file

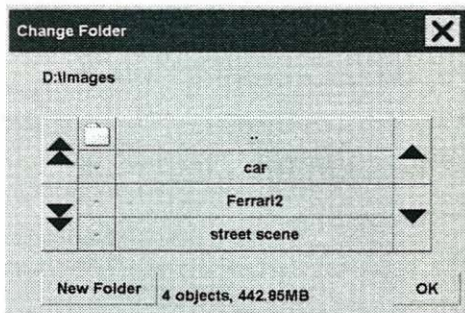
Scan to file stores your images as files. You can send them to your printer using the print from file function.

- - Select the Scan tab and set your scan options: type of original, size, filename, etc. Options such as margins, layout, and media profile can be set later in the Setup tab before you print from the file.

Copy	Scan	Print	Setup
Settings			
<input checked="" type="radio"/> B&W	<input checked="" type="radio"/> Color		
Type of original:	Color Photo		
Lightness:	0		
Scan resolution:	Normal		
Size:	Auto		
Resize:	None		
File name:	20050209-021003		
File destination:	D:\images		

Press the File name button to enter a new name. The default filename is the current date and time.


You can change the destination folder by pressing the File folder button.



b - To change folder:

- Use the arrows to find the desired folder.
- Press the folder up button (marked "..") to move up to the parent folder.
- Press a folder name to enter a folder.
- Create a new folder within the current folder with the New Folder button.

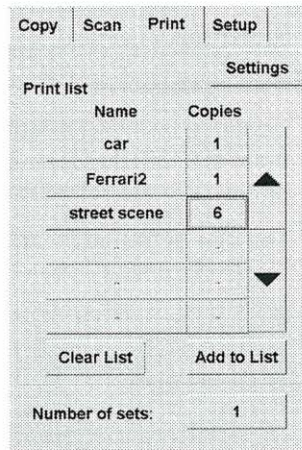
c - Click OK to return to the Scan to file dialog.



d - Press the Scan to file button  to start the scan-to-file process and save the image.

Printing files


Printing your files is set up and controlled through a convenient print list. You can set the number of copies you want by defining the number for each file individually, by determining the number of sets (how many times the whole list will be printed), or by using a combination of both.

- a - Press the Print tab.



Whenever you enter the Print dialog, the Copy button  changes to the Print button. 

The Print list group displays the files currently selected for printing. If the list is empty or it needs changing, you can select files by pressing the Add to List button.


- b - Check or change your Setup tab settings. The current Setup tab settings, such as margins, layout, printer and media profile, will apply to the whole print job.
- c - Press the Print button  to send the listed files to the printer.

NOTE

The Print tab is intended for printing files created with the Scan tab; it is not recommended for printing files from other sources.

Collated copies and copy sets


You can group your images into sets that are stored before going to the printer, and then print a specified number of these sets on your printer.


- a** - Insert the first document of your set into the scanner.
- b** - Make your copy settings in the Copy tab dialog.
- c** - Press the Collate Copy button. 

The original will then be copied as normal, but it will be stored inside your system instead of going to the printer.

Continue inserting originals that belong to the set and press the Collate Copy button for each one until all the originals in the set have been scanned.

You can adjust each copy in the set just as you can with single document copying.

- d** - Set the number of sets by pressing the Copies button in the Copy tab. A set contains all the input originals.
- e** - Press the Print button  to activate the whole copy job.

Abort the Collate session any time by pressing the Reset button. 

For jobs that require a high level of control and flexibility, consider using the Scan tab to scan to file and the Print tab to print the files.

Scanning thick media



Your scanner is capable of scanning heavyweight coated paper or cardboard. **Other kinds of thick media are not supported and could cause damage.**

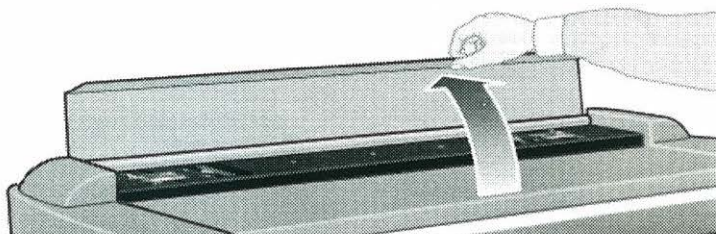
To scan thick media, you can change the insertion slot height on your scanner from 2 to 16 mm (0.08 to 0.63 inches). You can fit the slot to the thickness of your original.

NOTE

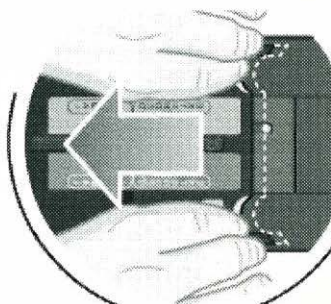
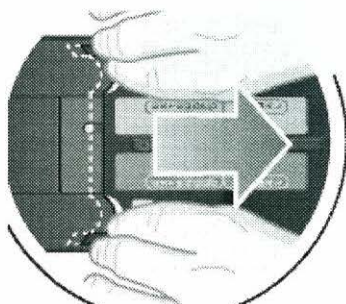
Changing the insertion slot height can affect the scanner's automatic control of border lines between the cameras, which is called 'stitching'.

To scan thick originals:

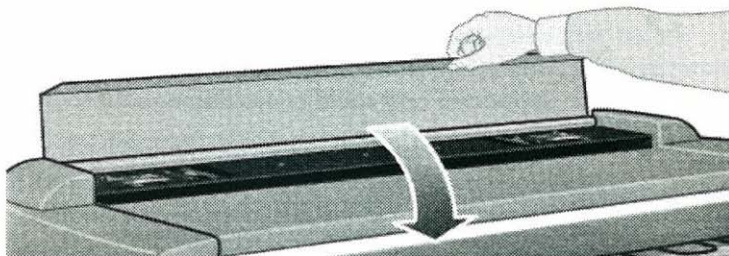
- a** - Open the scanner cover.



- b** - Press down on the platen as you pull first one slider, and then the other (left and right), towards the scanner's center until the media thickness adjustment sliders found at each side are at the same setting.



- c - Close the scanner cover.



- d - Load the thick original you wish to scan. Center loading is recommended with thick originals, so that the media transport rollers grip more evenly.
- e - Make a test scan to check for errors. Bulky thick material needs to be supported with both hands on its way in and out of the scanner.

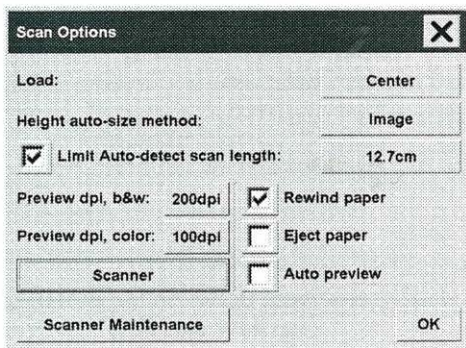
Errors will be easier to see in an image with a clear diagonal line. If lines seem uneven, proceed as follows:

- f - In the Setup tab, select the Scan Options button.

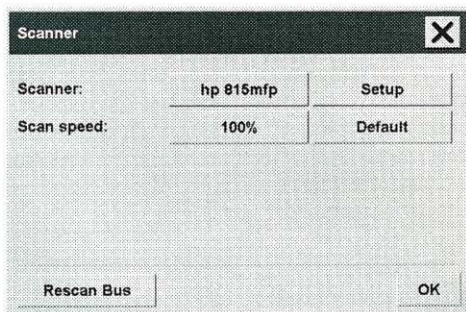
Copy	Scan	Print	Setup
Margins:	0.0/0.0/0.0/0.0cm		
Layout:	Normal		
Printer:	-		
Media profile:	-		
Account:	-		
Scan Options	Options		

Scanning thick media

g - In the Scan Options dialog, press the Scanner button.



h - In the Scanner dialog, press the Setup button.



i - Select the Extended Thickness tab, and check the box labeled "Use extended thickness paper handling".



- j** - Change the value for each of the scanner's cameras. Normally, only positive values should be used.
- k** - Make test scans and readjust the values until you are satisfied that the lines are stitched correctly.
- l** - Click OK to accept your settings.
- m** - Repeat steps (d) to (i) until you are satisfied with the results.

To return the insertion slot height to its Normal position:

- a** - Press down on the platen as you push first one slider and then the other (left and right) towards the sides of the scanner.
- b** - When the platen is returned to its Normal position, the message "Paper Guide in Extended Position" will be replaced by the Load option: Center or Side.

Previewing copies

The previewing feature allows you to control your document size and margins visually and readjust or relocate the paper frame on the image. Its size is determined by the size settings made in the Copy tab dialog. The paper frame's size and thickness in the preview window will be determined by the Input Size, Output Size, and Margins settings.

Press the Preview button  to load a fresh preview.



Zoom all

Setting size and margins, you need a view of the whole image. Resize the image so that it exactly fits in the preview window.



Zoom in

The zoom in axis is in the center of the preview window. Continue to press the Zoom In button to the required level of detail.



Zoom out

The zoom out axis is in the center of the preview window. Continue to press the Zoom Out button to the required level of detail.



One-to-one pixel viewing

View the image with one scanned pixel shown as one screen pixel.

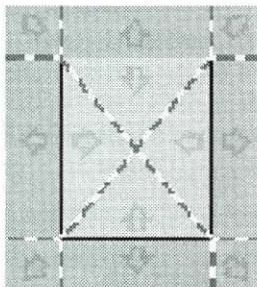


Resize paper frame

The Resize Paper Frame tool is especially useful for copying non-standard paper sizes.

When activated, the Resize Paper Frame Tool partitions the areas around the paper frame into sections. When a section is

touched, the closest frame side or corner is resized to the new position.



Move tool

Move the image to get any part of it centered or visible in the preview window.

There are two ways to move the image:

- By dragging anywhere in the image window.
- Touch a point on the screen, and that point will then be centered in the preview window.



Position the paper frame

You can position the paper frame directly in the preview and visually set your copy area.

There are two ways to move the frame:

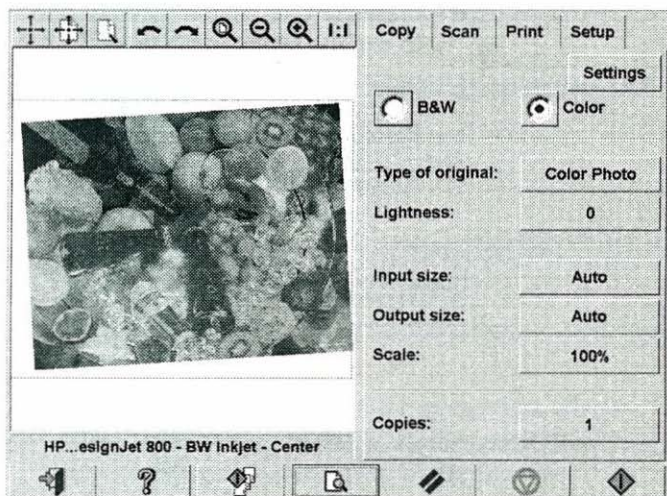
- By dragging anywhere on the screen. Imagine you are gripping the frame and dragging it around over the image.
- Touch a point on the screen, and that point becomes the new center for the Paper Frame.

This method is especially useful when you are making spot test strips for printing. It lets you continuously and rapidly reposition the frame on important areas that you want tested.

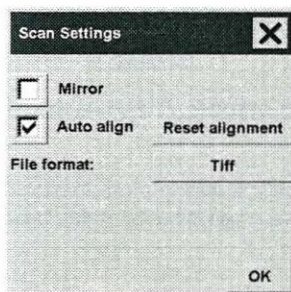
- Dragging the edges will resize the paper frame and is an alternative to the Resize Paper Frame tool.

 **Align left and Align right** 

The original appears crooked in the Preview Window. You do not need to reload the original. Press the align buttons to align the image with the paper frame.




Alternatively, press the Settings button in the Copy tab or in the Scan tab, and select the Auto-align option. This will align your image automatically. If you're not satisfied with the result, press the Reset alignment button, press OK, and align the image manually with the Align Left and Align Right buttons.



Adding a new printer

To add a new HP Designjet printer to the printer list in your scanner software, follow these steps:

- a** - Press the Quit button  and then the Exit button to exit the scanner software.
- b** - Press the System Setup button.
- c** - Press the Install HP Designjet button.
- d** - Follow the instructions on the screen.

Creating a new media profile

Before starting the following procedure, make sure you have color-calibrated the scanner, and make sure that the media profile you intend to create is not there in the list already.

- a** - Press the Setup tab.
- b** - Press the Printer button. If necessary, press the Tool button.
- c** - Press the Add Media Profile button.
- d** - Press the Calibrate RIP button.
- e** - Set the ink level and the gray balance, then press OK to return to the Media Setup menu.
- f** - Press the Print Color Sheet button to print a color patch reference sheet.
- g** - Load the color sheet into the scanner face down, aligning the arrow to the 10.5-inch mark (26.7 cm) measured from the right side of the scanner.
- h** - Press the Name and Scan Sheet button to assign a name to your new media profile.
- i** - Press the Enter key to accept the new name and begin scanning the color sheet.

The media profile is now in the list of available media profiles.

You can use the Delete button to delete media profiles. Only user-created profiles can be deleted.

You can use the Rename button to rename media profiles if needed.

You can use the Validate button to check that the media profile is valid for your combination of scanner and printer.

Scanning and copying files to CD

Your HP Designjet is capable of writing to compact discs in the same easy way as it writes to any other storage medium.

First, insert a blank CD into the touch screen's CD drive. You may also be able to write to a partly-used CD, if the CD has not been 'closed'.

Then, follow the normal steps for scanning or copying, but send the files to drive E: (the CD drive).

When you have finished, press the eject button on the CD drive to eject the CD. There will be a delay of about 45 seconds before the CD is ejected.

Touch screen error messages

The following table lists error messages, error codes, and the recommended course of action in each case. If the recommendation does not solve your problem, try restarting the system.

If you see an error code with no error message, then you must contact HP Support.

Message	Code	Recommendation
When combining thick media handling (paper guide in extended position) with auto-size detection, the size detection must be done separately by running a preview scan before the final copy or scan operation.	-19	Perform a preview scan, reloading the original into the scanner.
Error reading the RIP gray balance file	-16	The current media profile specifies the use of a CSV file for the RIP gray balance, but the file cannot be found. Either disable the use of gray balance, or attempt to recreate the CSV file.
Unable to reserve the scanner	-14	Check whether any other application is using the scanner.
Unable to rename the folder	-13	This occurs during file browsing operations, usually because the file is shared.
Unable to delete the folder	-12	This occurs during file browsing operations, usually because the file is shared. Close all applications and try again.
The folder must be empty	-11	Check that the folder is empty before deleting it.

Message	Code	Recommendation
The currently selected printer is not installed on the system.	-9	Install a Windows printer driver for the currently selected printer.
No scanner selected or selected scanner not present	-6	Check that the scanner is turned on. Check that the scanner is selected.
No media profile selected for current printer	-2	OK and run operation without media profile. Cancel and prepare a media profile before performing operation.
No printer selected	-1	Check that the printer is connected. Check the printer's configuration.
Unknown error in copy engine	00001	If scanning, check that you can make a prescan. If printing from a file, check that the file is valid. If printing, check that the printer is connected and installed. If you have found no error that you can correct, restart the system.
Invalid scan coordinates. The paper frame was placed fully outside the scan image.	00002	The paper frame was placed fully outside the scan image. You can reposition the paper frame so it covers some of the scannable area.
Scanning invalid size of area requested for scanning	00003	A negative scan width has been specified. Reselect the scan area and try again.
Not enough disk space for spool file	00006	Make sure the environment variable TEMP (or secondary TMP) points to a folder with plenty of space.
The scanner is currently on standby. Please press the soft power button on the scanner to activate it.	00008	Press the button.

Touch screen error messages

Message	Code	Recommendation
Error printing colorsheet	01003	Check that the printer is turned on and connected to the scanner. Print a test print to make sure that the printer is working.
Error opening mapfile	01007	This occurs just before copying, when the system tries to open a .map file but the file is not there, probably because someone has deleted it. Create and use a new media profile, or reinstall the scanner software.
Error detecting index-mark	01013	Reinsert the sheet and ensure it is aligned correctly and in the right position.
Sheet bad aligned	01014	Reinsert the sheet and ensure it is aligned correctly and in the right position.
Error detecting left margin	01015	Reinsert the sheet.
Error detecting right margin	01016	Reinsert the sheet.
Error reading colorsheet	01017	Check that you have inserted the correct sheet.
CLC aborted	01018	The user canceled the color map operation.
Wrong insert position?	01019	Reinsert the sheet and ensure it is aligned correctly and in the right position.
Can't find top of sheet	01020	Check that the sheet is inserted in the right position.
Can't find bottom of sheet	01021	Check that the sheet is inserted in the right position.

Message	Code	Recommendation
Does not correspond to this version of clc.dll!	01022	An incorrect version of the language resource DLL has been installed. Install a version of the DLL in the correct language.
Unable to open device for reading	02004	Check that the scanner is available.
Unable to open device for writing	02005	Check that the printer is available.
Unable to read from device	02006	Try again.
Unable to write to device	02007	If printing, check that the printer is connected and installed. Print a test print. If scanning to file, check that there is space on the hard disk, and check that the file's pathname is valid. If you have found no error that you can correct, restart the system.
Destination already exists	02013	Use another file name.
Device not available	03008	Check that the scanner is turned on. Check the connection to the scanner.
The scanner is initializing or warming up.	13496	Wait until the power light on the scanner is on and the other lights are off.
Media is present in scanner, but command was aborted by user	17977	Try again.
Paper jam	17980	Check rollers and mechanical paper detectors and remove any pieces of paper.

Scanning problems

If you notice problems with your scanned images, such as dirt spots, scratches, or inconsistent coloring, perform the routine maintenance procedures explained in your online guide, which include cleaning and calibration.

Restart the scanner when you have finished the maintenance procedures.

Flashing lights on the operator panel

If you notice a flashing light on your scanner's operator panel, it means that your scanner is reporting a problem of some kind.

Diagnostics light is flashing

The most likely explanation is that the scanning area needs cleaning. Perform the routine maintenance procedures explained in your online guide, which include cleaning. Restart the scanner when you have finished the maintenance procedures.

If the light continues to flash, there may be camera position errors. In this case, contact HP Support.

Wait light is flashing

This indicates that the scanner needs to make some readjustment but is unable to do so. Remove any paper or other media from the scanner, return the Original Pressure Platen to the normal position, and wait for the light to turn off.

Wait and diagnostics lights are flashing

In this case, disregard the wait light and respond to the diagnostics light as described above.

Printing problems

The image is cropped

If your image is cropped and no error message was displayed, make sure that you have set the media width for your printer in the scanner software.

White space with nesting

If there is space for another image on your media when using nesting, make sure that you have set the media width for your printer in the scanner software.


Setting the media width

Follow these steps to set the media width.

- a - Choose the Setup tab.
- b - Press the Printer button.
- c - If you see a list of printers, press the Tool button. 
- d - Press the Unprintable Area button.
- e - Press the Media Width button.
- f - Enter the media width and press the Enter key.

Scanner software in the wrong language

If your scanner software is in the wrong language for any reason, you can easily change the language as follows:

- a** - Press the Quit button  and then the Exit button to exit your scanner software. In case you cannot read the buttons, the Exit button is the lowest of the three buttons displayed after you have pressed the Quit button.
- b** - Log off the current user session and open a new session with the 'administrator' user name.
- c** - Press the System Setup button. This is the top button of the two displayed at the right-hand side of the screen.
- d** - Press the Change Language button. This is the top left button in the new window that appears.
- e** - Select your preferred language.

You will now have to wait a short time while the system shuts down and restarts.

Scanner software does not start

If your scanner system software does not start up when you turn on the touch screen, you will need to reinstall the software. Reinstalling this software will **delete** your own data and settings, so you should first save anything you wish to keep.

You need the 'System Recovery' CD that came with your scanner system.

- a** - With the system on, insert the System Recovery CD in the CD-ROM drive.
- b** - Power off the touch screen and then power it on again.

Once recovery has started, it is automatic. Ignore any menus. Remember to remove the CD when recovery is finished.

- c** - Power off the touch screen and then power it on again.



i n v e n t

© 2003, 2005 Hewlett-Packard Company

Part number: Q1279-90111

Second edition

Product of USA

Hewlett-Packard Española S.L.
Avenida Graells, 501
08174 Sant Cugat del Vallès
Barcelona
Spain



Q1279-90111